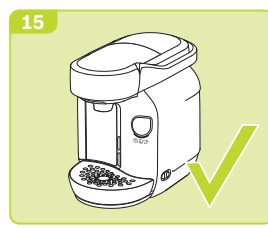
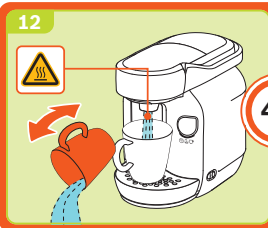
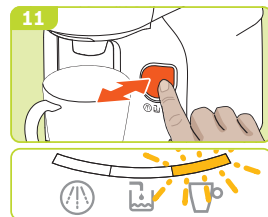
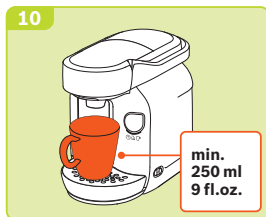
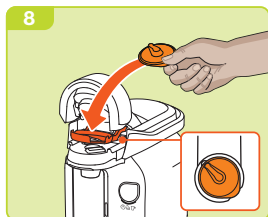
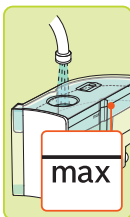
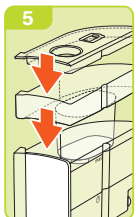
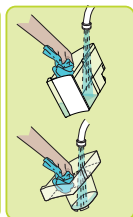
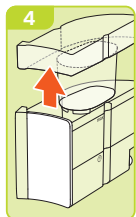
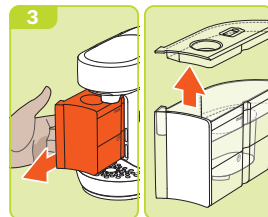
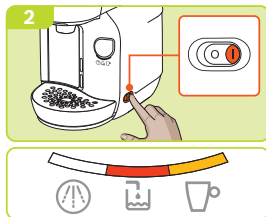
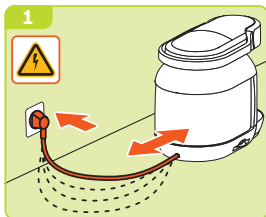


1



Get your TASSIMO ready



de Inbetriebnahme
 en First time use
 fr La première utilisation
 es Puesta en servicio
 pt Primeira utilização

it Messa in funzione
 nl Ingebruikneming
 sv Idrifttagning
 da Ibrigttagning
 no Første gangs bruk

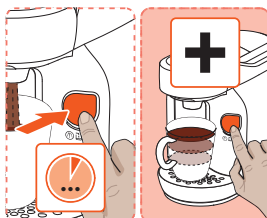
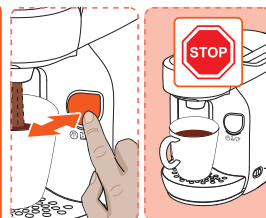
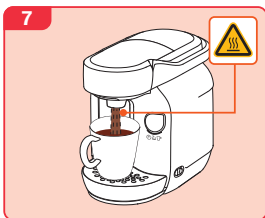
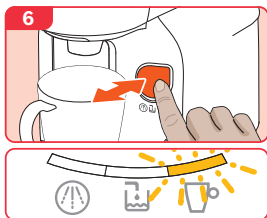
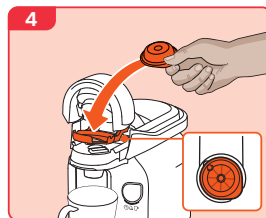
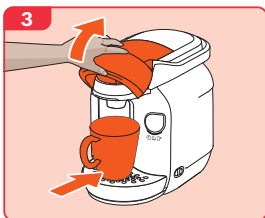
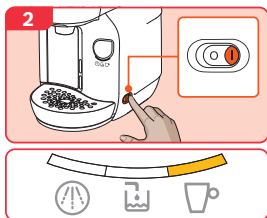
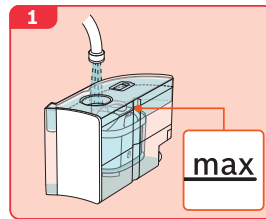
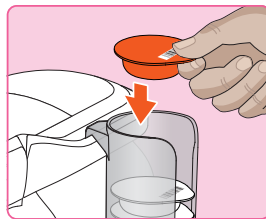
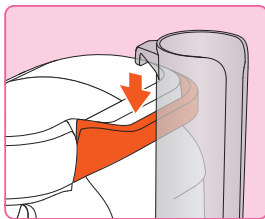
el Θέση σε λειτουργία
 pl Uruchamianie
 cs Uvedení do provozu
 sk Uvedenie do prevádzky
 ro Prima utilizare

ru Ввод в эксплуатацию
 uk Перше використання

8001 013 897 06/15

2 TASSIMO

Enjoy your first TASSIMO Drink



de Getränkzubereitung
 en Beverage preparation
 fr Préparation de boissons
 es Preparación de bebidas
 pt Preparação de bebidas

it Preparazione delle bevande
 nl Toebereiden van dranken
 sv Tillredning av drycker
 da Tilberedelse af drikke
 no Tilberedning av drikker

el Παρασκευή ροφήματος
 pl Przygotowanie napojów
 cs Příprava nápojů
 sk Príprava nápojov
 ro Prepararea băuturilor

ru Приготовление напитков
 uk Приготування напою

8001 013 897 06/15